



MINNEAPOLIS AREA SENIOR WORKERS ASSOCIATION

Our Mission: To develop a multidisciplinary community of professionals working in the field of aging who are educated, supported, and interconnected so they may improve services and advocate for older adults.

MARCH MEMBERSHIP MEETING

Date: Thursday, March 22, 2007

Location: Village Shores
6501 Woodlake Drive
(66th and Lyndale)
Richfield, MN 55423

Schedule: 2:25-2:40 Registration and Networking
2:40-3:15 Business Meeting
3:15-4:15 Program Presentation
4:15 Networking/Optional Tour

Topic: “Building Successful Relationships With Family Members: Dealing with Difficult Families”

Speaker: Mike Lorenz
Creator/Consultant of SMILE,
Success for the Memory Impaired in a Loving Environment

Objectives: At the end of the presentation participants should be able to:

- List three ways to promote healthy family relationships prior to the resident admission.
- Demonstrate successful communication skills essential to working with frustrated family members.
- Explain common emotions family members experience.
- List 5 ways to maintain successful family relationships.

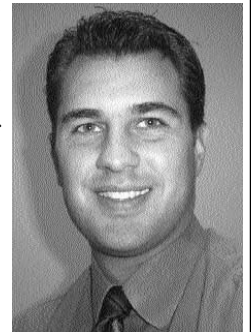
1 CEU Credit

Contact: Amanda Kristek, Director of Marketing
at Village Shores 612-861-1186

MESSAGE FROM THE PRESIDENT

Lions and Lambs...

Looks like March will most certainly go down in the records as coming in like a Lion, since they are predicting multiple inches of snow over the next couple of days. I am writing this on February 28th and tomorrow is March already. Let's hope that the adage holds true and we can plan on a quiet, lamb-like exit to winter.



Last month I talked about the impact that members of MASWA can have by participating on the Board or by being involved in a committee of the Board. This month I want to get the “lion's share” of you, those that can't really commit to a Board position or committee, thinking about ways that you would like to see MASWA improve or change this year. A sub-committee of the current Board is putting together a survey (perhaps online) that will be coming out this spring. Please be watching for news of the survey and give some thoughtful consideration to how MASWA has and has not met your expectations over the years and apply some constructive feedback to assist the Board in making plans for the upcoming year.

As always, I hope this newsletter finds you all happy, healthy and doing well! See you at the next meeting!

Paul R. Blom
President

Happy St. Patrick's Day to all!

Even those who are Irish for only a day.



See Specific Parking Directions on Page 2 (back page) of this newsletter. →

Are You Looking Forward to Spring?

Mark Your Calendars!

The MASWA Spring Luncheon is fast approaching on Thursday, May 17th, 2007. It will be held in that beautiful building at "The Reserve" in Plymouth. We will have great food and a great speaker! Our featured speaker will be Denise Franck Aboody of Franck and Associates. She will present, "Leadership & Communication: Re-Energize and Get Connected."

More details will be forthcoming in your April newsletter and on our website. You will also be able to register for this event at the March 22nd membership meeting. Be sure to make a note in your calendar to get registered right away!



Parking Directions to Village Shores for the MASWA Membership Meeting on Thursday, March 22, 2007

At the northwest corner of 66th and Lyndale you will see a Champps Restaurant and a Snyders drug store. Please park in that lot and enter the building through the Snyders main door. Someone will be there to greet you and direct you the rest of the way.



Village Shores
6501 Woodlake Drive
Richfield, MN 5423

For more program information you may contact:
Cynthia Frances, Co-chair Program Committee
at 612-220-1814.

Annual MASWA memberships are available.

Guests are welcome to attend any MASWA program for a \$5.00 fee per meeting.



**MINNEAPOLIS AREA
SENIOR WORKERS ASSOCIATION**

**P.O. BOX 26630
MINNEAPOLIS, MN 55426**